



Sailing Instructions: Bart's Bash, Sunday 17 Sept 2017

1. Rules: The event will be governed by the Racing Rules of Sailing 2017-2020 and the HKSF prescriptions current on the start of the race. The HKSF prescriptions also apply to those boats carrying advertising.

2. Notice to Competitors: These will be posted as described in the supplementary sailing instructions.

3. Changes to Sailing Instructions: Any changes to these instructions will be notified by the L flag and will be published on the DBYC website at <http://www.dbyc.net>, on the DBYC facebook page and on the LBC clubhouse by 0900 on 17 Sep 2017.

4. Signals Made Ashore: These will be made on the DBYC website and on the LBC clubhouse. The latest signal will be made at 0900, after this all signals will be displayed by the committee boat when in position. In this case, boats should listen out on CH72, or sail within hailing distance for details if not radio equipped.

5. Schedule of Race: The race will take on Saturday 17 Sep 2017 All times mentioned in these instructions are Hong Kong standard time as defined by the Hong Kong Observatory and can be coordinated from the clock on their website at <http://www.hko.gov.hk/gts/time/HKSTime.htm> and division start timings are listed as follows:

Warning order	1100
Yacht Div B (HKPN \geq 1000)	1105
Yacht Div A (HKPN <1000)	1110
Beach Cat SCHRS \geq 1.05	1125
Beach Cat SCHRS <1.05	1130

6 Supplementary sailing instructions:

6a. Classes and Flags: The division of racing boats into racing groups and their flags are detailed below. Yachts will display their flag on their backstay, or if not equipped with a backstay, their Stbd shroud. Beach cats need not display a flag.

Div B	IC Flag J
Div A	IC Flag K
Beach Cat \geq 1.05	IC Flag E (Dart 15/16/18, Hobie 16, Shadow, Nacra 500)
Beach Cat <1.05	IC Flag F (Formula Beach Catamarans)

Visual representations of the class flags are at Annex B

6b. Courses: The course chosen will depend on weather conditions on the race day. It will be notified by the committee boat displaying both the course number pennant and a numeral mounted on the stern, prior to the start sequence. The courses are described at Annex A. Note that if the R Flag is flown under the course number pennant, then the course to be sailed is the reverse of the designated course. In this case, the letter R will also be displayed on the stern of the committee boat next to the course number. Beach Catamarans will be provided with waterproof course cards.

- Notes: 1. There may be a windward mark laid no greater than 1nm from the start line if weather conditions dictate. This shall be rounded to port, unless the committee boat displays a green flag – then it shall be rounded to Stbd.
2. The finish line shall be the same as the start line unless weather conditions change after the race start and the course has to be shortened. This will be notified by the committee boat displaying the S flag. In this case, the committee boat will be positioned along the North shore (South for R courses of Peng Chau for races 1 to 3, or the South shore (North for R courses) of Peng Chau for races 4 to 6, along with an ODM defining the new finish line.
3. The committee boat will be SY Illusion.



4. Charts showing the courses are at Annex A.
5. This is Datum Rock!



6. Attention is drawn to the fact that the courses fall within Hong Kong Speed Limit Zone B, in which vessel of length 60 metres or less should not proceed at more than 15 knots. A map detailing Zone B is at Annex C.

6c. Signals Made Afloat: A description of the signals to be used afloat is shown at Annex B.

6d. Notes and Amendments to the use of the Racing Rules of Sailing:

Rules 30.1, 30.2 and 30.3 will not be enforced.

Rule 44.1 is amended to a one turn penalty when she may have broken one or more rules in Part 2.

Any boat deemed to be OCS which does not restart will have a 5% time penalty applied.

7. Time Limit: The last finish will be at 15:30 for all classes. Any boat not completing the course by this time will be recorded as DNF.

8. Protests: This is a friendly race for charity and protests are discouraged! Any skipper who really wants to lodge a protest must do so to the race officer as soon as practicable using any recognised method, but this must be received by the Race Officer no later than 2 hours after the last boat has finished. The protest will be heard after the race and a decision given by 2359 on the day of the race. Any protest must be accompanied by a fee of HK\$100 which will be returned if the protest is upheld. If not, the fee will be forfeit and donated to charity.

9: Scoring: Yachts will be scored with their elapsed time being adjusted in accordance with their Hong Kong Performance Numbers as published on the HKSF website at 2359 on 16 Sep 2017. Yachts without current HKPN will be awarded a DBPN derived from their anticipated performance. The corrected time used for scoring will be the elapsed time multiplied by 1000 and then divided by their HKPN.

Beach catamarans will be scored in accordance with elapsed times corrected using the Small Catamaran handicap Racing System (SCHRS) as published on the SCHRS website at 2359 on 16 Sept 2017.

In addition, combined overall results for the two Clubs will be published correcting the SCHRS rating x 784 = HKPN. Also, a worldwide results list of all Bart's Bash competitors will be produced by the main event organisers using 'Bart Numbers' and the results published on the Bart's Bash website.

10: Radio Communication. Except in an emergency, to respond to amendments to these sailing instructions from the race officer, or to lodge a protest, a boat shall neither make radio transmissions while racing nor receive radio communications not available to all boats. This restriction also applies to mobile phones or any similar device. Notwithstanding this regulation, yachts are encouraged to keep a listening watch on Ch72 which will be used by the Race Committee and also to ensure they provide a mobile phone number for which reception can be monitored. Beach catamarans are strongly advised to carry a mobile phone in a waterproof container.

11. Risk Statement: Competitors are reminded that rule 4 of the RRS 2017-2020 states that: *"The responsibility for a boat's decision to race or continue racing is hers alone"*. Sailing, and, in particular racing, is a hazardous pursuit. The DBYC and LBC have taken every reasonable measure to ensure safety during the organization of the event and will, so far as it is able, endeavour to create a safe racing environment. However, responsibility for the actions and conduct of each participating vessel must lie, in all respects, with the Skipper of that vessel. By entering and starting the race, all Skippers acknowledge that they are solely responsible for the safe operation of their vessel and the personal safety of their crews before, during and after the race, and for any decision to race or to continue racing

All those taking part in the event do so at their own risk and responsibility. Entrants shall note and advise all crew members that competitors participate at their own risk and that the DBYC and LBC do not accept any liability for any loss or damage to persons or property that may result from such participation.

12. Safety: All yachts shall comply with the current edition of the ORC Special Regulations Category 4 equipment.

All beach catamaran sailors shall wear buoyancy aids and are strongly advised to carry a knife and a mobile telephone which is on their person in a waterproof pouch.

A yacht will not race with an anchor or other similar piece of equipment outside the sheer-line of the boat.

All participating boats are to be insured to the minimum level required by the relevant Club regulations and Hong Kong ordinances and shall produce a valid Certificate of Insurance if requested by the Race Committee.

13 Other Information:

Race Officer: Simon Ludlow

e-mail: simon.ludlow@hotmail.com Mobile: 9549 4399

This Sailing Instruction should be read in conjunction with the main event Sailing Instruction at:

<http://www.bartsbash.com/sites/default/files/BBSI%202017.pdf>

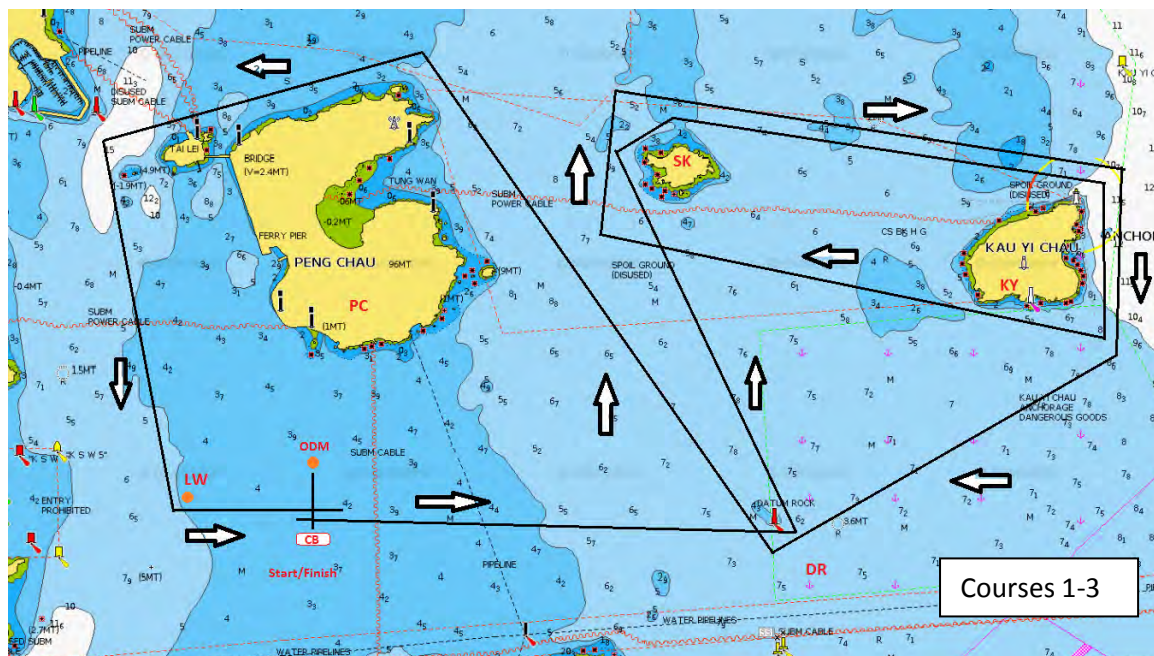
More information about the Bart's Bash can be found at the main event website at: <http://www.bartsbash.co.uk>

Annex A to the Sailing Instructions for DBYC/LBC Bart's Bash.

Course 1. Start – WW mark (if laid) – Datum rock (to Port) – Si Ki Yi Chau (to Stbd) – Kai Yi Chau (to Stbd) – Si Kai Yi Chau (to Stbd) – Kai Yi Chau (to Stbd) Datum Rock (to Stbd) – Peng Chau (to Port) – LW mark (to Port) – Finish.

Course 2. Start – WW mark (if laid) – Datum rock (to Port) – Si Ki Yi Chau (to Stbd) – Kai Yi Chau (to Stbd) – Datum Rock (to Stbd) – Peng Chau (to Port) – LW mark (to Port) – Finish.

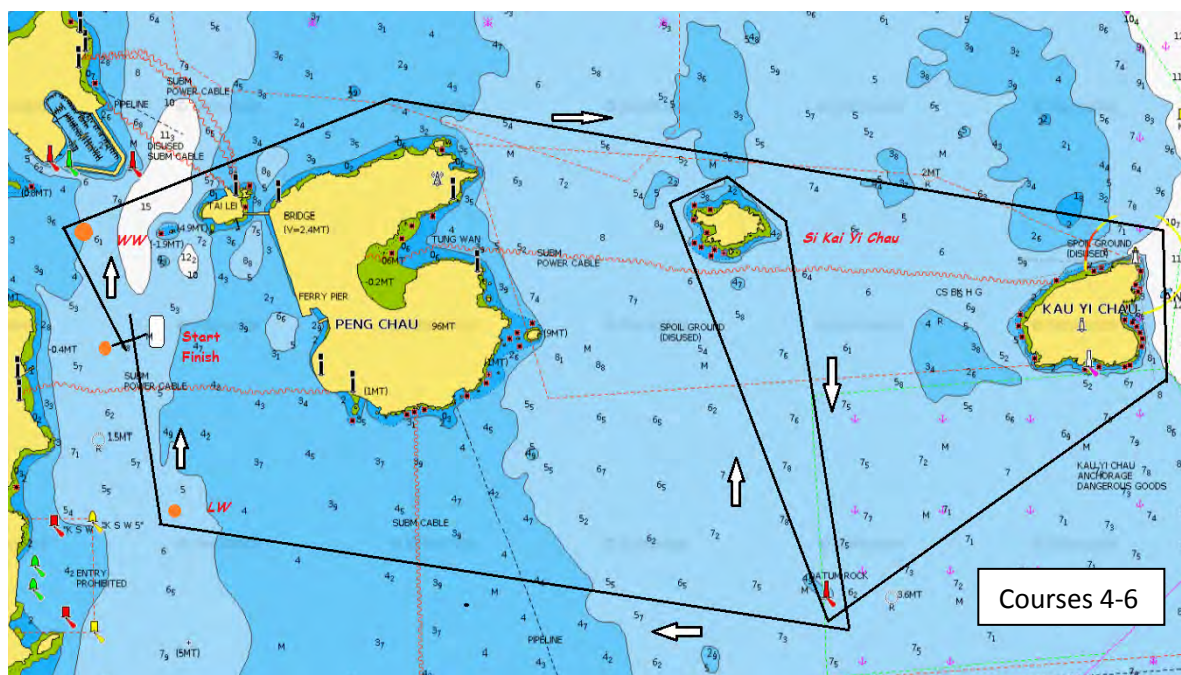
Course 3. Start – WW mark (if laid) – Datum rock (to Port) – Peng Chau (to Port) – LW mark (to Port) – Finish.



Course 4. Start – WW mark (if laid) – Peng Chau (to Stbd) – Kai Yi Chau (to Stbd) – Datum Rock (to Stbd) – Si Kai Yi Chau (to Stbd) – Datum Rock (to Stbd) – LW mark (to Stbd) – Finish.

Course 5. Start – WW mark (if laid) – Peng Chau (to Stbd) – Kai Yi Chau (to Stbd) – Datum Rock (to Stbd)– LW mark (to Stbd) – Finish.

Course 6. Start – WW mark (if laid) – Peng Chau (to Stbd) – Si Kai Yi Chau (to Stbd) – Datum Rock (to Stbd)– LW mark (to Stbd) – Finish.

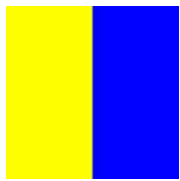


Annex B to the Sailing Instructions for DBYC/LBC Bart's Bash.

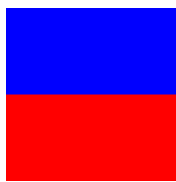
Class Signals.



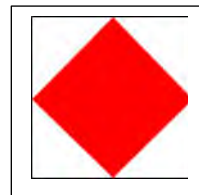
Yacht Div B



Yacht Div A



Beach Cat \geq 1.05



Beach Cat $<$ 1.05

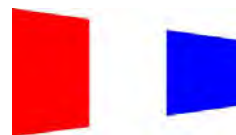
Course Signals.



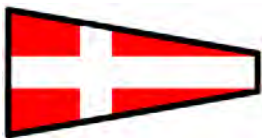
Course 1



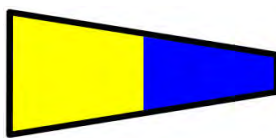
Course 2



Course 3



Course 4



Course 5

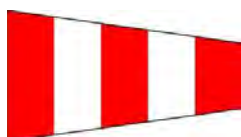


Course 6

Race Signals



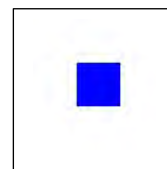
Notice of Change.



Racing Postponed.



Racing Cancelled



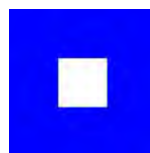
Course Shortened



Start Line



Round WW mark to Stbd.



Preparatory Signal



Committee Boat in Position on Finish



Individual Recall.



General Recall.



Reverse of designated course to be sailed.

Annex C to the Sailing Instructions for DBYC/LBC Bart's Bash.



Hong Kong Waters – Speed limits (Knots).

圖例 LEGEND

最高航速 (節) Maximum Speed (knots)		
區 Zone	船隻長度 Length of vessel	
	超過 60 米 Over 60 m	60 米或以下 60 m or less
A	8	10
B	10	15
C	15	15