

# DISCOVERY BAY YACHT CLUB



## Notice of Race & Entry Form

Middle Island Regatta – 31<sup>st</sup> October & 1<sup>st</sup> November 2009

**Entries are invited for the DBYC Middle Island Regatta (MIR) in affiliation with the ABC.**

The Regatta is open to all DBYC and ABC members, and members of any HKSF-affiliated club. Eligible boats may be entered by returning the attached entry form to the DBYC by 1700 hrs on Wednesday, 28<sup>th</sup> October 2009. The event will consist of two races with two prize-givings, scheduled as follows:

**Fri, 30 Oct**

A/R Visiting boats arrive DBMC  
1900 Bilge Bar meet-and-greet  
2000 Buffet in DBMC Restaurant  
2130 Optional Skippers Briefing (all information will be available electronically)

**Sun, 1 Nov**

0830 Breakfast at Middle Island (\$50 pp)  
0900 Skippers briefing  
1030 First start Race 2 off MI  
1600 Finish off DB  
1700 Prize-giving Race 2 and overall DBMC Headland with Bar and Tapas

**Sat, 31 Oct**

1000 Start Race 1 off DB  
1600 Finish off MI  
1700 “Trick or Treat” on the ABC MI dockside  
2000 ABC’s Middle Island Bollywood Halloween party (\$200pp)  
2100 Prize-giving Race 1

**RACING OUTLINE**

Race 1 will be an “islands race” starting in the vicinity of Discovery Bay and finishing near Middle Island. The race is also being run as part of the Cruisers Owners Association 2009/2010 Championship.

Race 2 of the MIR will be conducted as a Pursuit Race. All boats shall start at a time defined by their handicap, and finish order will equal prize order. Start times will be issued at the race briefing prior to Race 2. Handicaps may be adjusted by the Race Committee overnight to reflect each boat’s performance from Race 1. DBYC SRI 8.2 refers.

There will be an option for Skippers to join the Waglan 1 Race being hosted by ABC on Sunday 1<sup>st</sup> Nov. Course yet to be decided. If possible we will try to hold a joint race.

Boats will be handicapped by HKPN, or DBPN (issued by the DBYC) if no HKPN is available. The DBYC Handicapping Committee reserves the right to adjust existing HKPN handicaps using the PIPPS system (as described on the COA website), in order to fairly balance the performance of all boats entered.

Prizes will be awarded for places in each Race by class and also for the COA championship and overall for the weekend, including line honours.

# DISCOVERY BAY YACHT CLUB

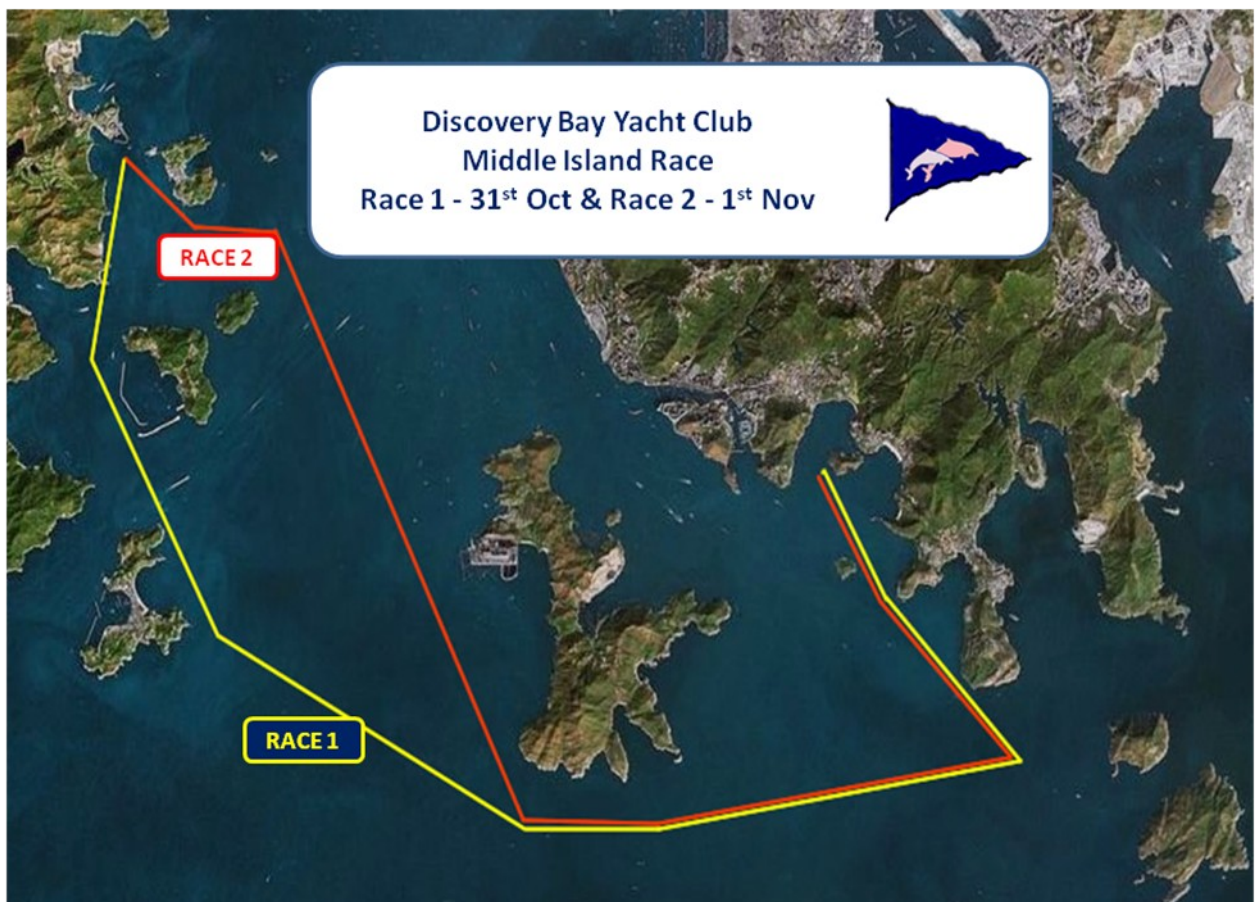


## Notice of Race & Entry Form

### Middle Island Regatta – 31<sup>st</sup> October & 1<sup>st</sup> November 2009

The DBYC Middle Island Regatta will be governed by the ISAF Racing RRS 2005-08, the Prescriptions of the HKSF, the DBYC Standard Racing Instructions (SRI) and the Middle Island Regatta Sailing Instructions. All boats shall comply with the current edition of the ORC Special Regulations Category 4, and shall hold valid third party insurance.

The attention of all competitors is drawn to the Fundamental Rules in Part 1 of the RRS, particularly with respect to the safety of a boat and her crew being the sole responsibility of the Skipper, who must ensure that the boat is seaworthy and properly equipped and that the crew are able to cope with emergencies and poor weather conditions. All those taking part in the event do so at their own risk and responsibility. Each boat is solely responsible for the decision to race or to continue racing. Entrants shall note and advise all crew members that competitors participate at their own risk and that the DBYC does not accept any liability for any loss or damage to persons or property that may result from such participation.



### PLAN FOR THE FUN STUFF

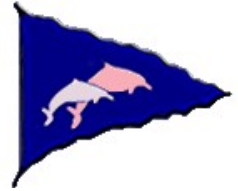
We always get very well supported by the staff and management at both the ABC and DBMC. This year the major social event will be held at ABC Middle Island during the overnight stop.

On arrival at ABC MI, we will celebrate Halloween for the kids and crews on the dockside with plenty of cold refreshments and fiendish “trick or treats”. There will be prizes for dressing up the boats :- for the most creative themed anchor light and for the overall scariest “Flying Dutchman” (Bart has an advantage).

Dinner will be “Bollywood Halloween” .....fancy dress encouraged “ghouls in turbans or zombies in saris”

### ADMINISTRATION

# DISCOVERY BAY YACHT CLUB



## Notice of Race & Entry Form

### Middle Island Regatta – 31<sup>st</sup> October & 1<sup>st</sup> November 2009

DBMC - Berthing will be possible, on a space-available basis, at the DB Marina Club on the nights of 30<sup>th</sup> Oct and 1<sup>st</sup> Nov 2008, **with charges waived for participating boats**. Participating crews may use the Marina Club bar and restaurant as a guest of, and in company with, a Marina Club member.

ABC – Berthing on the MI pontoons.

Further details will be published in the Sailing Instructions

**Please submit by 1700 hrs on Wednesday, 28<sup>th</sup> October 2009.**

Entries received after this date will be considered as Late Entries.

\* delete where applicable

Boat Name: \_\_\_\_\_ Sail / Reg No: \_\_\_\_\_  
Boat Model: \_\_\_\_\_ LOA: \_\_\_\_\_  
HKPN Rating: \_\_\_\_\_ LWL: \_\_\_\_\_  
Total Crew: \_\_\_\_\_ Radio: Yes / No \*  
Skipper's Name: \_\_\_\_\_ Mobile tel no: \_\_\_\_\_  
Telephone: \_\_\_\_\_ E-mail: \_\_\_\_\_  
Participating in:- Race 1 HKPN Yes/No  
and Race 1 as part of COA Championship Yes/No (must be COA member)

Participating in:- Race 2 Yes/No

I require berthing at the Discovery Bay marina on the nights of: Friday / Sunday \*

I require berthing at ABC Middle Island on the night of Sat, 31<sup>st</sup> Oct: Yes / No \*

Numbers for Middle Island buffet (\$200 pp) on Sat, 31<sup>st</sup> Oct: \_\_\_\_\_

Numbers for Middle Island breakfast (\$50 pp) on Sun, 1<sup>st</sup> Nov: \_\_\_\_\_

Entry Fee: \$ 300 (or \$200 per race)  
Late entry fee: additional \$100

I agree to abide by the Rules as defined in the DBYC Middle Island Regatta Sailing Instructions and enclose a cheque for the total entry fee of: \$ \_\_\_\_\_

Signed: \_\_\_\_\_

Name: \_\_\_\_\_

Date: \_\_\_\_\_

Notes :

1. **Please submit entries by 1700 hrs on Wednesday, 28<sup>th</sup> October 2008.** Entries received after this date will be considered as Late Entries and incur an additional late entry fee.
2. Berthing charges at the DB marina will be waived for participating boats on the nights of 30<sup>th</sup> and 1<sup>st</sup> Nov.
3. Mooring/Berthing charges at the MI ABC will be waived for participating boats on the night of 31<sup>st</sup> Oct.
4. The Race Committee may exclude from the race any boat that does not meet the required safety standards.
5. See the Notice of Race and Sailing Instructions for further info.

Please make cheques payable to: **Discovery Bay Yacht Club** and mail entry form and payment to the Club mailbox at: DBYC, c/o Discovery Bay Marina Club, Discovery Bay, Lantau Island, NT.

**Send Registration by email to [mir@dbyc.net](mailto:mir@dbyc.net) or fax to 25264199 before 1700 hrs on Wednesday, 28<sup>th</sup> October 2008.**